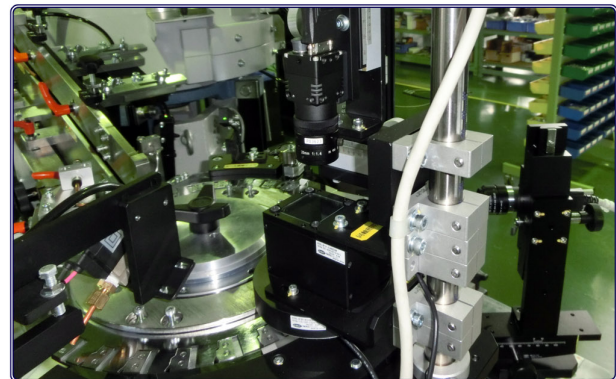
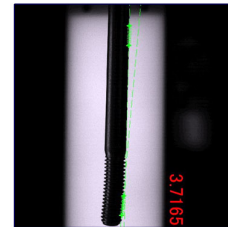
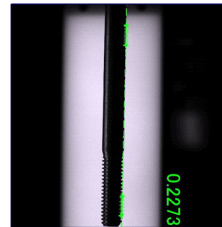
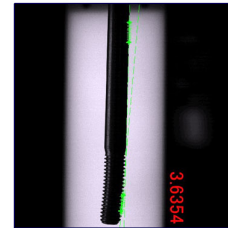
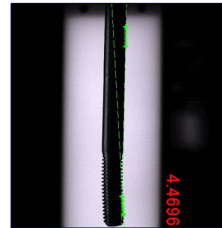
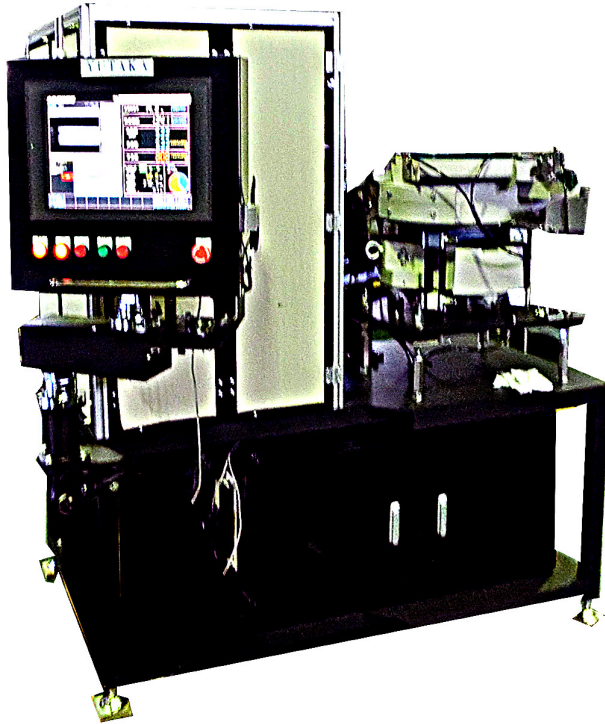


# Long Screw Bend Inspection & Sorting Machine

M3 ~ M6 x 30 ~ 100mm (M8 ~ M12 x 100 x 250mm)

Internationally Patented Multi-Table System,  
No Changeover Required!

150 ~ 350 PPM



## Target Work :

M3 ~ M6 (M8 ~ M12)

Shank Length: 30 ~ 100mm (100 ~ 250mm)

• Disk: Multi-Table System  
(M3 ~ M6 · M8 ~ M12 Combined)  
(Domestic & International Patent)

## Inspection Options :

### Upper Camera:

- Head Shape

### Lateral Camera:

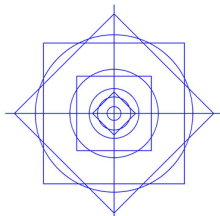
- Shank Length
- Presence of Threading
- Screw Shape

### 2nd Lateral Camera:

- Bent Portion

※Other Inspection Options Available

- ① High-speed inspection of shank axis bend.
- ② Threaded portion defect inspection.
- ③ Shank inspection.
- ④ Head shape inspection.
- ⑤ Precise preset counter (6 Digits)



株式会社ユタカ  
YUTAKA CO., LTD.

24-12, Shinmachi Higashi-Osaka  
Osaka 579-8037 JAPAN  
TEL: 072-984-6246 FAX: 072-981-8016  
Email: t-tricia@tech-yutaka.co.jp  
Email: y-naoki@tech-yutaka.co.jp  
www.tech-yutaka.co.jp